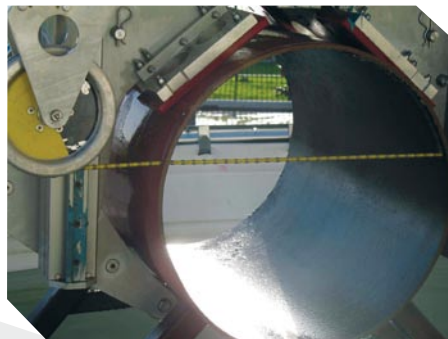
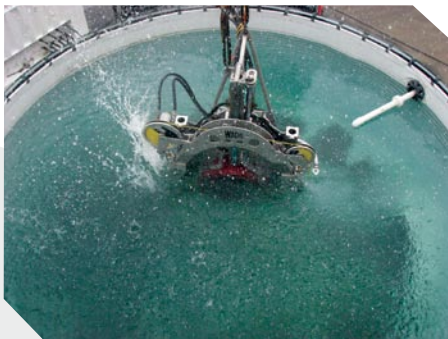
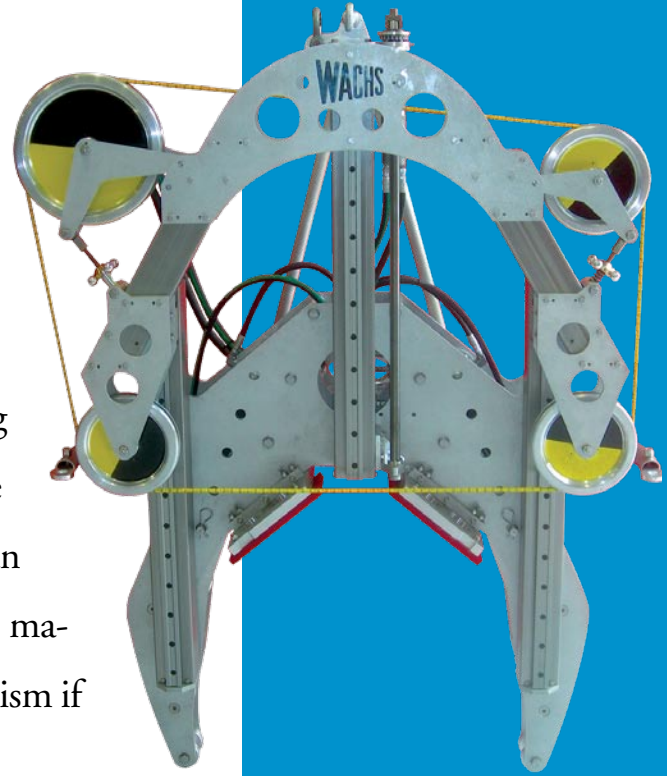




Diamond Wire Saw

The Wachs Subsea Wire Saws are designed to cut submerged pipe of varying materials and thicknesses. These machines operate on hydraulic power, and are controlled remotely using the Wachs topside control panel (TCP).

These saws use a continuous-loop diamond cutting wire and a hydraulic feed system that advances the cutting wire through the pipe. Using a wire rather than a blade provides more reliable cutting on varied pipe materials, and helps avoid binding of the cutting mechanism if the pipe bends and pinches while the saw is engaged.



FEATURES

- Lightweight aluminum plate construction
- Constant tension bow feed
- Replaceable clamp contact pads
- Indexable clamp pin locators
- Synchronized clamp cylinders
- Wire tension adjustments
- Removable wire guide wheels
- Large diameter high contact area wire drive wheels
- Hydraulic wire drive motor w/overhung bearing support
- Adjustable guide rails
- Manual feed override levers
- Overload clutches
- Lightweight planetary feed drive
- Lift interfaces for vertical or horizontal deployment

* Not available for sale or use in the United Kingdom, Denmark, Netherlands, Germany, France, Italy or Norway.



600 Knightsbridge Pkwy. • Lincolnshire, Illinois 60069 | 800.323.8185 • +1.847.537.8800 worldwide • +1.847.520.1147 fax

E.H. WACHS COMPANY

www.wachsco.com