





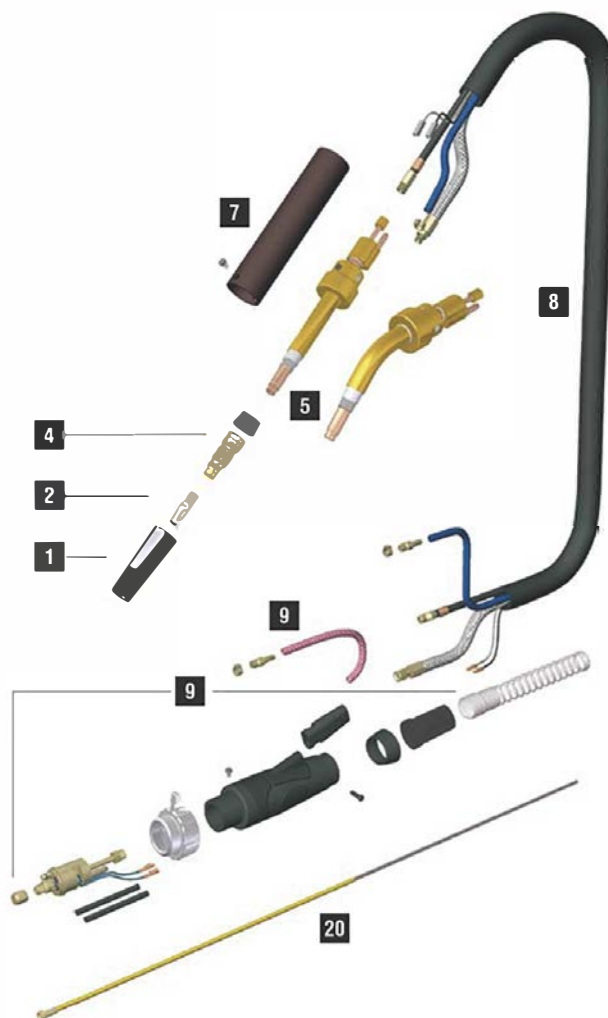
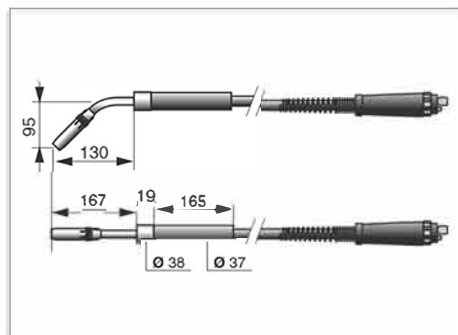


AUTOTMAX 4001



CODIGO	↔	↕	⏏	⏏
MB0603	3 m	10'	0°	 EURO
MB0604	1,5 m		0°	
MB0605	1,5 m		45°	
MB0606	3 m	10'	45°	

DATOS TECNICOS		
		
	1,3 kg	2.87 lb
V PEAK	113	
	1,0 ÷ 2,4 mm	.040" ÷ 3/32"
X 100%	450A CO ₂ - 400A Mix	
	2÷4 bar	
	1,6 l/min	



	CODE			Ø			REF	
1	MC0011			16 mm	5/8"	82 mm	-	5
1	MC0012			18 mm		82 mm	-	5
1	MC0013			20 mm		82 mm	-	5
1	MC0298			14 mm		82 mm	-	5
2	MD0250-78		M9X1 - CuCrZr	0,8 mm	.030"	38 mm	-	20
2	MD0250-79		M9X1 - CuCrZr	0,9 mm	.035"	38 mm	-	20
2	MD0250-80		M9X1 - CuCrZr	1,0 mm	.040"	38 mm	-	20
2	MD0250-82		M9X1 - CuCrZr	1,2 mm	.045"	38 mm	-	20
2	MD0250-84		M9X1 - CuCrZr	1,4 mm	.052"	38 mm	-	20
2	MD0250-86		M9X1 - CuCrZr	1,6 mm	1/16"	38 mm	-	20
2	MD0250-90		M9X1 - CuCrZr	2,0 mm	5/64"	38 mm	-	20
2	MD0250-94		M9X1 - CuCrZr	2,4 mm	3/32"	38 mm	-	20
4	ME0141		M9X1 - brass			51 mm	-	5
20	GM0540		yellow steel liner	1,2 ÷ 1,6 mm	.045" ÷ 1/16"	3 m	10'	124.0041 1

CODIGO			CODIGO	CABLE		CODIGO		CODIGO				
5	MG0035		1	8	MN0080	3 m / 10' - 16 mm ²	8a	BX0733	3 m / 10'	8f	MQ0205	3 m / 10'
5	MG0036		1	8	MN1039	1,5 m / - 16 mm ²	8d	QB0076	3 m / 10'	8g	QB0090	3 m / 10'
5	MQ0340						8e	QA0019	3 m / 10'			
7	MP0125											
9	AR0102											
9	BW0480											
9	FA0026											
9	MT0101											

