

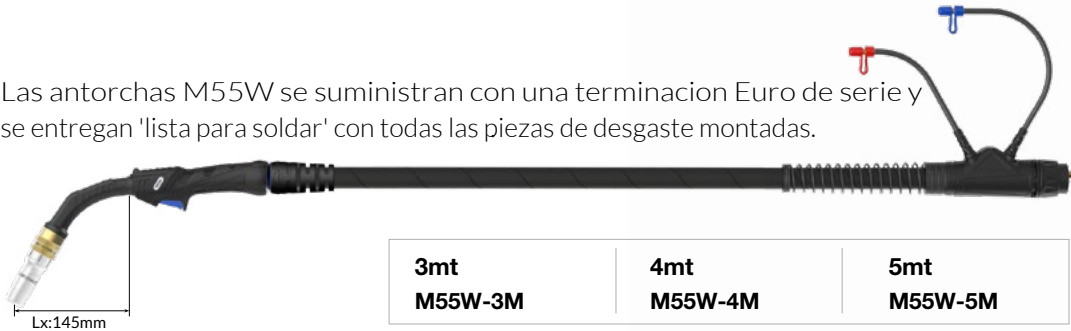
M55W Antorcha de soldadura Mig refrigerada por agua

Ratings:	580A CO ₂ , 560A mezcla de gas M21, 400A pulse @100% Max. carga 25KW con 1600W refrigerado por agua, 0.9mm-2.0mm hilo
	550A CO ₂ , 530A mezcla de gas M21, 360A pulse @100% Max. carga 23KW con 1200W refrigerado por agua, 0.9mm-2.0mm hilo

Ideal para aplicaciones de acero pesado y de alta deposición

PAQUETES DE ANTORCHAS MIG DE ALTO RENDIMIENTO ARC M

Las antorchas M55W se suministran con una terminación Euro de serie y se entregan 'lista para soldar' con todas las piezas de desgaste montadas.



Compact Handle

Piezas de recambio

Toberas				
Código	Descripción	Ø	Espesor	Material
A •AMN55WCN	Conjunto cónico / aislante	15mm	3.0mm	Cobre
AMN55WTN	Conjunto cónico / aislante	13mm	3.0mm	Cobre
AMN55WCYN	Conjunto cilíndrico/aislante	17mm	3.0mm	Cobre
A1 •AMN55WCN-C	Tobera cónica con aislador y anillo de retención			
AMN55WTN-C	Tapered Nozzle c/w Insulator & Retaining Ring			
AMN55WCYN-C	Cylindrical Nozzle c/w Insulator & Retaining Ring			

B Anillo fijacion tobera			
Código	Descripción	Medida	Material
•AMN6WCNR	Anillo fijación tobera: extracción	30.5mm	Latón

C Tubo contacto				
Código	Descripción	Medida (mm)	Ø Hilo (mm-inch)	Material
Standard Series				
AM6WCT09	Contact Tip	M10*35.5	0.9 - 0.035	CuCrZr
AM6WCT10	Contact Tip	M10*35.5	1.0 - 0.040	CuCrZr
•AM6WCT12	Tubo contacto	M10*35.5	1.2 - 0.045	CuCrZr
AM6WCT14	Contact Tip	M10*35.5	1.4 - 0.055	CuCrZr
AM6WCT16	Contact Tip	M10*35.5	1.6 - 0.063	CuCrZr
AM6WCT20	Contact Tip	M10*35.5	2.0 - 0.080	CuCrZr
A Series				
AM6WCT10A	Contact Tip	M10*35.5	1.0 - 0.040	CuCrZr
AM6WCT12A	Contact Tip	M10*35.5	1.2 - 0.045	CuCrZr
AM6WCT16A	Contact Tip	M10*35.5	1.6 - 0.063	CuCrZr
AM6WCT20A	Contact Tip	M10*35.5	2.0 - 0.080	CuCrZr
AMC6WCT10A	Contact Tip	M10*35.5	1.0 - 0.040	Copper
AMC6WCT12A	Contact Tip	M10*35.5	1.2 - 0.045	Copper

D Adaptadores de boquilla

Código	Descripción	Material
•AM6OSWTAC-20	High Performance 2.0mm Recess	Cobre
AM6OSWTAC-45	High Performance 4.5mm Recess	Cobre
AM6OSWTAB-20	Tip Adaptor 2.0mm Recess	Latón
AM6OSWTAB-45	Tip Adaptor 4.5mm Recess	Latón

E Aislante Portatubo Contacto

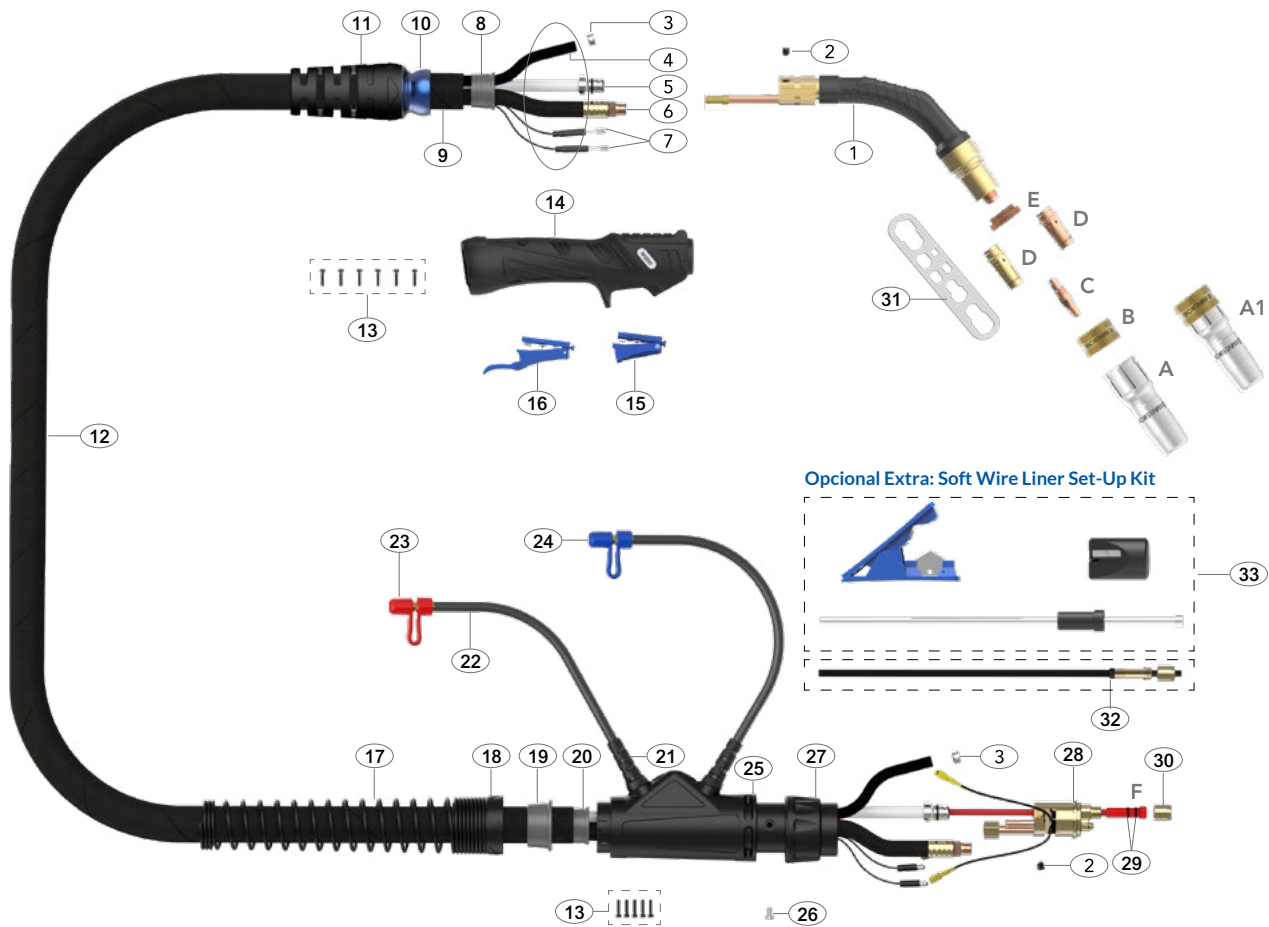
Código	Descripción
•AM55WTAI	Aislante portatubo contacto

F Sirga

Código	Descripción	ØHilo
•AM6SL-1012-30	Sirga de acero x 3mt	1.0-1.2mm
•AM6SL-1012-40	Sirga de acero x 4mt	1.0-1.2mm
•AM6SL-1012-50	Sirga de acero x 5mt	1.0-1.2mm
AM6SL-16-30	Steel Liner x 3mt	1.6mm
AM6SL-16-40	Steel Liner x 4mt	1.6mm
AM6SL-16-50	Steel Liner x 5mt	1.6mm
AM6SL-20-30	Steel Liner x 3mt	2.0mm
AM6SL-20-40	Steel Liner x 4mt	2.0mm
AM6SL-20-50	Steel Liner x 5mt	2.0mm
AM6OSWL-1012-30	Soft Wire Liner x 3mt	1.0-1.2mm
AM6OSWL-1012-40	Soft Wire Liner x 4mt	1.0-1.2mm
AM6OSWL-1620-30	Soft Wire Liner x 3mt	1.6-2.0mm
AM6OSWL-1620-40	Soft Wire Liner x 4mt	1.6-2.0mm

• Denotes torch package standard wear part set-up

For alternate liner options please refer to page 46-48



Piezas de recambio

Código	Descripción
1	AM5502 Swan Neck Assembly
2	AM6X5 Outer Liner Retaining Screw
3	AM15400023 Water Hose Clamp 10mm
8	AMS8010 Canvas Cover Retainer
10	AMS3208-1 Ball Joint
11	AMS3208-S Cable Support With Nut
13	AMSP1-1 Screw Pack
14	AMM2514 Handle Kit
15	AM2516 Microswitch Standard Trigger
16	AM2516L Microswitch Extended Trigger
17	AM8027 Cable Support Spring
18	AM8028 Housing Lock Nut
19	AM8009 Canvas Cover Clamp
20	AM8010 Canvas Cover Retainer
21	AM1820 Hose Support
22	AM5017 Water Outlet Hose Assembly
23	AM80320 Red Cap Stopper
24	AM80310 Blue Cap Stopper
25	AM5022 Housing Assembly
26	AM1526 Gun Plug Screw (M4 x 0.7)
27	AM1519 Gun Plug Nut
28	AM5098 Water-Cooled Plug Body Assembly
29	AMLOR Liner 'O' Ring
30	AM1826 Liner Retaining Nut
31	AMWS Wear Parts Spanner

Código	Descripción
Opcional Extra	
32	AMOSWLG Soft Wire Liner Gasket
33	AMOSW-LINER-T Soft Wire / Combi-Liner Set-up Kit

Piezas de cable

Descripción	Código		
	3mt	4mt	5mt
4 Water Inlet Hose Assembly	AM5012-30	AM5012-40	AM5012-50
5 Outer Liner Assembly	AM6008-30	AM6008-40	AM6008-50
6 Power Cable Assembly	AM6015-30	AM6015-40	AM6015-50
7 Switch Lead Assembly	AM5010-30	AM5010-40	AM5010-50
9 Canvas Cover Assembly	AM5019-30	AM5019-40	AM5019-50
12 Complete Cable Assembly	AM5506-30	AM5506-40	AM5506-50

Soldadura con alambres blandos

For welding with Aluminum wires use a Soft Wire / Combi-Liner (page 47-48). Optimum installation is achieved when using the Soft Wire / Combi-Liner set-up kit.